

HOW POVERTY INFLUENCES THE WORKFORCE



Shelter: \$11,516



Clothing: \$2,207



Food: \$12,001



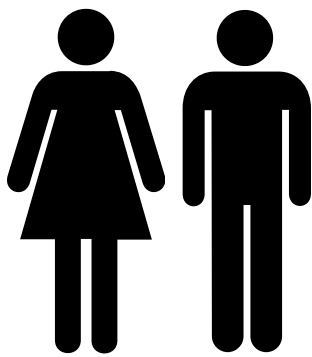
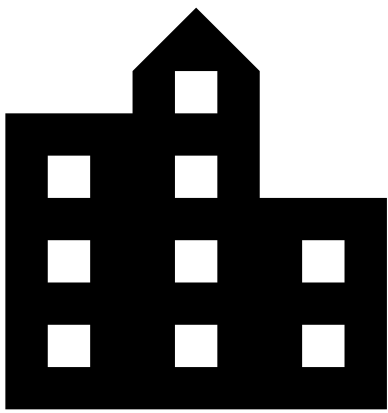
Transportation: \$4,328



Other: \$11,635

The Poverty Line for a Four Person Family in Rural Nova Scotia is \$42,800 (NET)

Source: Statistics Canada. Table 11-10-0066-01 Market Basket Measure (MBM) thresholds for the reference family by Market Basket Measure region, component and base year (2018)



-\$2,564

Two adults working for Minimum Wage (2020) have a collective NET income of \$40,236*

*Based on a 36.25 hour work week for 52 weeks annually

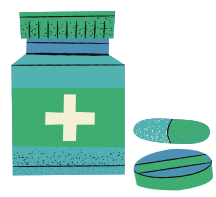
Employees who live below the Poverty Line are more likely to face challenges with:



Less Reliable Transportation***



Less Nutritional Options **



Less Access to Prescriptions**



Less Dependable Housing***



Less Reliable Communications***

*** Tackling Poverty Together (2017) <https://www.canada.ca/en/employment-social-development/programs/poverty-reduction/reports/tackling-poverty-together.html>

**Food Action Research Center (2017) <https://frac.org/wp-content/uploads/hunger-health-impact-poverty-food-insecurity-health-well-being.pdf>

BUSINESS WHO HIRE MINIMUM WAGE WORKERS NEED TO UNDERSTAND THE CHALLENGES CASUED BY LIVING BELOW THE POVERTY LINE

For more information on Workforce Influences

Contact our Team: info@roman3.ca